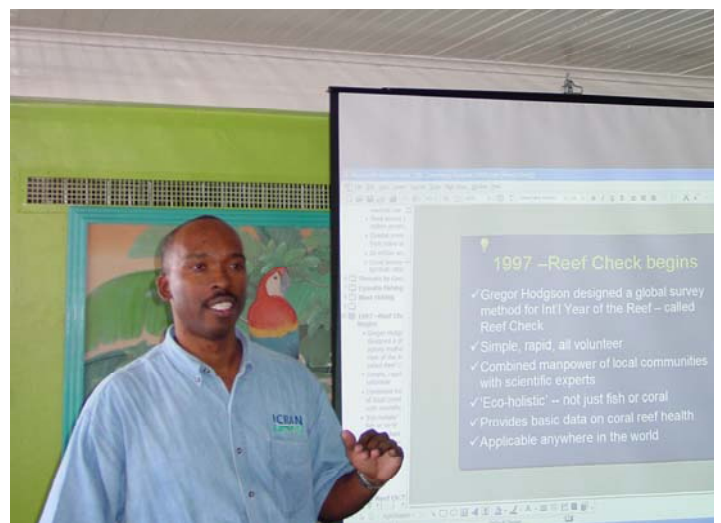


JCRMN trains Sandals International in Reef Check Monitoring

**Dulcie Linton,
Caribbean Coastal Data Centre (CCDC)**

The Jamaica Coral Reef Monitoring Network (JCRMN) partnered with Reef Check and Sandals International to conduct a training workshop at Beaches Boscobel, Oracabessa, St. Mary, Jamaica, from February 7-9, 2004. Malden Miller, the Project Manager for the International Coral Reef Action Network (ICRAN) Project, facilitated by the United Nations Environment Programme - Caribbean Environment Programme (UNEP-CEP) and Noylis Amair, Director of Watersports for Sandals and Beaches Resorts, coordinated the workshop, with George Warner and Peter Edwards of the Centre for Marine Sciences, UWI as the team scientists. Fifteen members of Sandals dive team, representing hotels from the local Sandals International chain were trained and certified in the Reef Check method of coral reef monitoring.



Malden Miller, ICRAN Caribbean Project Manager and Reef Check Team leader addresses the workshop participants.

Trainers were all JCRMN members representing participating organizations; the Centre for Marine Sciences and the University Sub-Aqua Club (USAC) at the University



Participants conduct a "dry-run" of the Reef Check method under the guidance of Peter Edwards and George Warner of the Centre for Marine Sciences, UWI

of the West Indies, the International Coral Reef Action Network (ICRAN) Project and the United Nations Caribbean Environment Programme (UNEP-CEP), the National Environment and Planning Agency (NEPA), Caribbean Coastal Area Management (CCAM) Foundation and The Nature Conservancy (TNC). There was a ratio of approximately one trainer to two trainees, which resulted in closer supervision and more effective relaying of instructions. Table 1 lists the trainees and trainers.

The training sessions, which began Saturday mid-morning, included a PowerPoint and video presentation on the Reef Check method of monitoring, conducted by Malden Miller. After the classroom sessions, a “dry run” of the monitoring technique was done which clarified any misconceptions. Later in the afternoon,

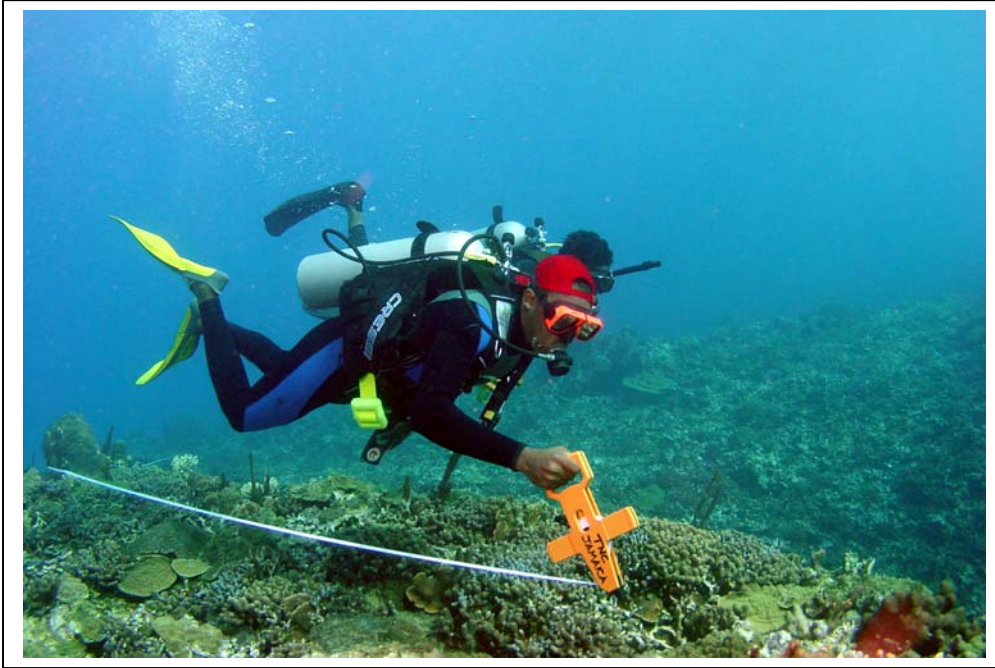
training in actual data collection was done under the supervision of the JCRMN trainers. Sunday morning began with a review of the previous day’s activities where participants were asked to provide feedback. George Warner and Peter Edwards, of CMS, addressed the issue of data management and the importance of adherence to the methodology to ensure accurate data collection, while Krishna Desai, Manager of the Coastal Zone Branch of NEPA spoke on the Blue Flag Certification Program to which Sandals International was subscribing and which now required Reef Check monitoring of reef locations within 500 m of the shoreline. Afterwards the trainees collected data at

Table 1. List of trainees and trainers	
Sandals Trainees	
Noylis Amair	Sandals Resorts International
Kerrith Armstrong	Sandals Royal Caribbean
Richard Baddal	Beaches Grand Sport
Devon Brown	Beaches Boscobel
Channeil Cadogan	Sandals Negril
Michael Clarke	Beaches Boscobel
Norman Clayton	Beaches Negril
Raymond Earle	Sandals Montego Bay
Anthony England	Sandals Royal Caribbean
Elfred Greenfield	Sandals Negril
Avril Hazlewood	Grande Sport Villa Golf Resort & Spa
Nicholas Jack	Sandals Dunn’s River
Renée Sinclair	Sandals Montego Bay
Shaun Sinclair	Beaches Negril
Rohan Williams	Sandals Dunn’s River
The JCRMN Reef Check trainers	
Malden Miller	Team Leader, ICRAN, UNEP-CAR/RCU
George Warner	Team Scientist, CMS, UWI
Krishna Desai	NEPA
Peter Edwards	CMS, UWI
Dave Guinness	USAC
Brandon Hay	CCAM
Nathalie Zenny	TNC



Sandals Reef Check participants onboard the “Ocheana” return from the reef site after collecting data

Boscobel West (Channel Edge) from both the shallow and deep. These data will be analyzed and used to report on the status of the reefs at this site. The workshop culminated on Monday with a practical session on data entry using the data collected during Sunday's exercise as well as a slide show of reef creatures from Boscobel (done by Krishna Desai). The workshop was thought to be very effective and has generated great enthusiasm among the trainees who are now looking forward to collecting data from their respective locations.



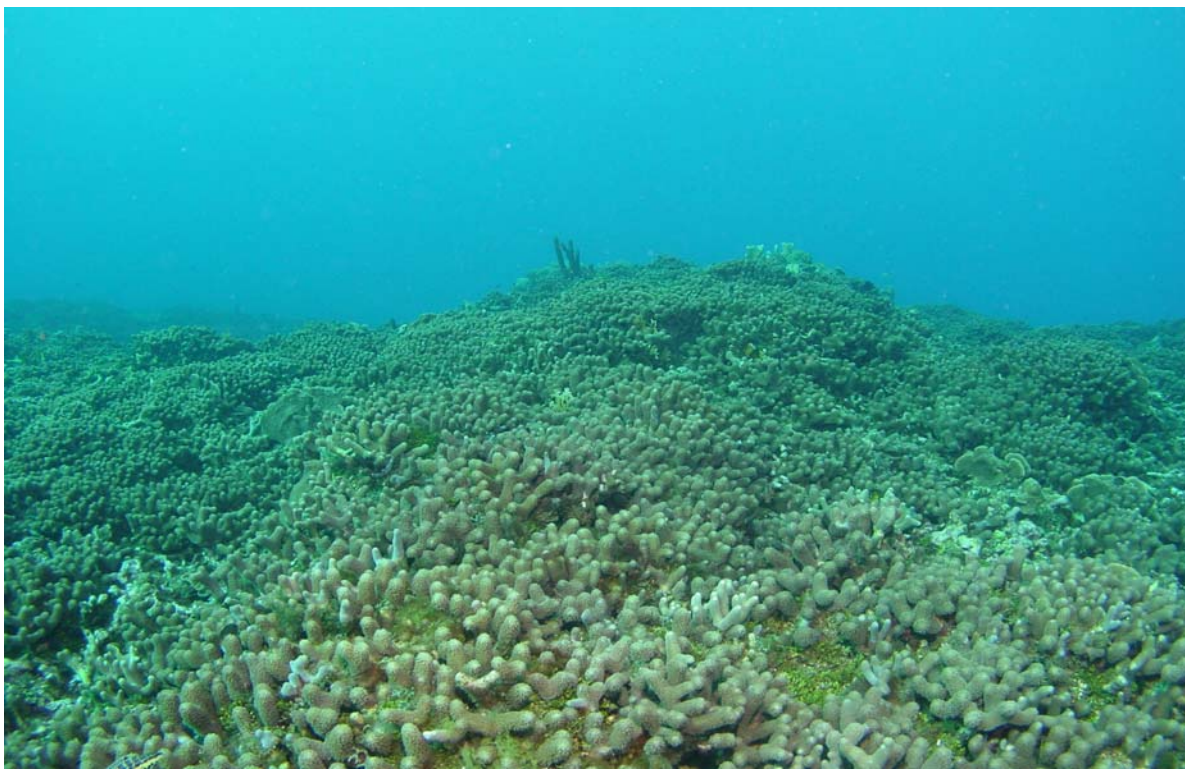
← Trainee Michael Clarke lays out a 50 m tape, under the supervision of Dave Guinness, in preparation for conducting Reef Check monitoring.



← A trainee prepares to record coral reef benthic data closely watched by Brandon Hay of CCAM.



A healthy stand of *Acropora palmata* coral found at the site



The Channel Edge reefscape, showing a large healthy stand of the coral *Porites porites*